

THE
Mardler
BROCKDISH & THORPE ABBOTTS



Edition No. 248 December 2023 - January 2024

**THE MARDLER is FREE and delivered to all
houses in Brockdish and Thorpe Abbots**

Also available on-line at www.themardler.org.uk

<i>Editor</i>	01379 668663
Robert Buck	robertbuck1974@talktalk.net
<i>Chairperson</i>	01379 668630
Jan Croxson	jpcrocky@btinternet.com
<i>Technical Editor</i>	01379 668585
Jo Slater	jogslater@hotmail.com
<i>Advertising</i>	01379 668072
Judith Chambers	juddecham@gmail.com
<i>Treasurer</i>	01379 668549
Janice Stacey	janicestacey@btinternet.com
Cheryl Mounser	01379 741435
	chezzaanne@icloud.com
Ben Poole	01379 668416
	bp@benpoole.com

The views expressed in The Mardler are not necessarily those of the Editorial team. The Editor reserves the right to amend or alter any copy received.

BROCKDISH VILLAGE HALL TIMETABLE

Tuesday	Rest and Restore (7.00pm)
Wednesday	Art group (9.00am) Badminton (3.00pm & 5.00pm)
Thursday	Yoga (10.15am) Tea Dance (1.30pm) Carpet Bowls (7.30pm)

From local events and history to Parish Council news, please look at the village website:

www.brockdishandthorpeabbotts.com

ADVERTISING IN THE MARDLER

If you are interested in advertising, the current rates are £25 for ¼ page, £50 for ½ page and £100 for a full page, which covers the 6 issues from 1st April annually. The cost for less than 6 issues is £5 per issue for ¼ page, £10 per issue for ½ page and £20 for a full page. For further information please contact Judith Chambers, see above.

Harleston Surgery	01379 853217
Emergencies	999
Police Harleston and Diss	101
NHS Direct	111
Electricity Power Cuts	105
Gas Emergencies	0800 111 999
Anglian Water	03457 145 145
South Norfolk Council	01508 533633
Brockdish Village Hall <i>Bookings Jill Edwards</i>	01379 669057
Thorpe Abbots Village Hall <i>Bookings Robert Buck</i>	01379 668663
Waveney Heritage Centre	01379 668285
Carpet Bowls Club <i>Peter Croxson</i>	01379 668630
Art Club <i>Sue Hughes</i>	01379 855414
Badminton <i>Roger Woodrow</i>	01379 669016
Yoga <i>Belinda</i>	07856 216735
Rest and Restore Class <i>Janet</i>	07951 714477
South Norfolk District Councillor <i>Clayton Hudson</i>	01379 676259
South Norfolk County Councillor <i>Martin Wilby</i>	01379 741504
Parish Clerk <i>Teresa Hines</i>	01379 308617
South Norfolk Help Hub	01508 533633 0845 269078
Waveney Food Bank	01379 870506


Welcome to this festive edition of The Mardler. How the year has flown by! It doesn't seem that long ago that we were out enjoying the limited sunshine that was our summer, and now here we are getting ready for Christmas once again. Village life becomes very busy over the next few weeks, with lots of Christmas events taking place in our communities and churches. It is important to remember that Christmas is a very mixed time for lots of people. Whilst people celebrate with family and friends, it can also be a lonely time, especially in isolated rural communities such as ours. So please look after each other, and give a spare 10 minutes to have a cup of tea and a chat with someone you know is on their own. Such a little gesture could make a huge difference. Wishing you all a very healthy and happy Christmas, and a peaceful New Year.

Rob Buck, Editor

REMEMBER

Closing date for entries in the February/March 2024 issue is

7th January 2024. Articles received after this date will not be included in the next issue.



The Mardler Editorial Team
would like to wish all
our readers, distributors,
contributors and advertisers a
Very Merry Christmas and a
Happy New Year. We thank each
one of you for making this such
an interesting and successful
publication.

Harleston Library - Celebrating 60 Years of Serving the Community

Tel: (01379) 852549, email Harleston.lib@libraries.norfolk.gov.uk

This December sees the 60th anniversary of the opening of Harleston Library. We plan to celebrate in the New Year but for now we need your help!

Do you remember the opening day? Were you there? Did you visit in the early days? Do you have any other memories of Harleston Library that you would like to share? If so, please e-mail us at the above address or pop something through our door, we would love to hear from you!

We will keep you posted about our celebration plans but for more information about events at the library please follow us on Facebook at: <https://www.facebook.com/DissHarlestonLongStrattonLibrariesNorfolk/>

Opening Hours:

Monday: 8am-7pm (Staffed 11.30am-7pm)
Tuesday: 8am-7pm (Open Libraries all day)
Wednesday: 8am-7pm (Staffed 10am-7pm)
Thursday: 8am-7pm (Open Libraries all day)
Friday: 8am-7pm (Staffed 11.30am-7pm)
Saturday: 8am-4pm (Staffed 11.30am-4pm)
Sunday: 10am-4pm (Open Libraries all day)



"The time leading up to the funeral was made bearable knowing that you were at the end of the telephone."

– from a family we have cared for at Rosedale



Rosedale
FUNERAL HOME

We are a family business and promise to provide exceptional care and a truly personal 24 hour service, when you need it most.

Victoria Road, Diss Telephone: **01379 640810**
www.rosedalefuneralhome.co.uk

Bringing the Library to You

Our Home Library Service delivers books and other media free of charge to people unable to get to their local library due to poor health, mobility issues, or caring responsibilities. To use this service please contact the Norfolk Library and Information Service on 0344 800 8020 or email libraries@norfolk.gov.uk.

To learn more about becoming a Norfolk Home Library Service Volunteer, please visit royalvoluntaryservice.org.uk, call 01603 397998, or email norfolkhlis@royalvoluntaryservice.org.uk.

Mobile Library

Visits Brockdish and Thorpe Abbotts every 4 weeks on a Thursday. Next visit is the **25th January 2024**.

Stopping at:

- Brockdish Grove Road, 12.10 pm
- Thorpe Abbotts, Mill Road (opposite Westview), 12.35 pm

SEPTIC TANK SERVICES



- INSTALLATIONS • EMPTYING • SERVICING •
- REPAIRS • DRAIN JETTING •
- DRAIN CAMERA SURVEYS •
- DRAINAGE WORKS • DIGGER WORKS •

LENNY JOLLY

07905 794221

www.septictankservices.info

Brockdish Christmas Lights Switch On

Saturday 9th December
6.00pm



*Followed by festive refreshments
in the Village Hall*

All Welcome



rh graphics

**No fuss graphic design.
We'll have a chat,
find out what you need.
The world's your winkle.**

Graphic/artwork for general print and signage.

Website design and maintenance.

Exhibition and wayfinder signage.

Logo design. Vehicle graphics. PVC Banners.

www.rhgraphics.com +44 7510 639573

rachel@rhgraphics.com



swimming school

SWIMMING LESSONS

Babies from 6 weeks old, pre-school children, school-age children and adults swim with us in lovely private pools across Norfolk and Suffolk.

Come and join in!

We teach small group swimming lessons

Only 4 children in a class for beginners
& advanced beginners!

Private Tuition for Children and Adults

* Water Aerobics * Holiday Activities * Squad *
* Teacher Training * ...and more!

Water Lilies

Swimming School

t: 01379 740489

e: treacle@waterliliesswim.co.uk

www.waterliliesswim.co.uk



Foot health for all
Experience expert,
personal care with a Foot
Health Professional in the
comfort of your own home

**Qualified Foot Health Professional
(MCFHP, MAFHP) offering home
visits in the Waveney Valley area**

Dr. Gaye White 07941 212035
gayewhite39@gmail.com
www.foot-health-for-all.co.uk



**Susan Whymark
Funeral Service Ltd**

Independent and Family Run

Serving Eye, Harleston and the surrounding areas Since 2004

We offer a range of services to suit your individual needs

- Funerals tailored to your needs and budget
- Full estimates given at time of arrangement
- Pre-arranged funeral plans arranged in accordance with FCA Regulations
- Direct Cremations
- Support Groups
- Memorials



We provide an efficient but friendly service through our professionally qualified staff

Chestnut House, 12 Progress Way,
Eye, Suffolk, IP23 7HU

Ley House, 11a London Road,
Harleston, Norfolk, IP20 9BH

Tel: 01379 871168 (24hr) Tel: 01379 851253 (24hr)

See our customer reviews at

www.susanwhymark.co.uk Email: susan@susanwhymark.co.uk



Thorpe Abbotts Christmas Extravaganza Weekend

Saturday 9th & Sunday 10th December

Saturday 9th December, 4pm, Village Hall

Christmas Lantern Making with Crafty Bombers, followed by lantern procession to the Pump

Saturday 9th December, 5pm, Village Pump

Christmas Lights Switch On, followed by festive food, drink and live music at the Village Hall, including a visit from Father Christmas

Sunday 10th December, 4pm, All Saints Church

Christingle service and carols at All Saints Church, followed by festive refreshments

For further details please contact

Paul Slater (tel. 668585)

Simon Beet (email allsaintsta1@btinternet.com)

An Evening with Author Colin Sutton - Expression of Interest
Brockdish Village Hall

The evening with Colin Sutton, as previously advertised in the October/November 2023 edition of "The Mardler", has been arranged for **Friday 1st March 2024 at Brockdish Village Hall at 7.30pm.**

YES MARCH! That is how popular and in demand Colin is. If you wish to attend this visual presentation, please contact me direct on 01379 668818, 07767 211143, or email me at ddon.mackenzie@btinternet.com.

It should last about 2 hours. Tea/Coffee and biscuits will be available (donations accepted). You are always welcome to bring something stronger if you wish. Adverts for this will appear on both Village notice boards, both Village Halls, Waveney Heritage Centre and The Old King's Head Pub. There are places available still, but please let me know as soon as possible to avoid disappointment, as the maximum number is 100

Don Mackenzie

ddon.mackenzie@btinternet.com

D.A.R SERVICES LTD
DOMESTIC APPLIANCE REPAIRS
01379 898062

RICKINGHALL
REPAIRS AND INSTALLS OF ALL MAKES AND
MODELS OF DOMESTIC APPLIANCES

Syleham and Wingfield Village Hall

Thursday 7th December, 7.00 for 7.30 pm: Christmas inspired Floristry Demonstration by professional Florist Lyn Curtis ICSF, £10 including light refreshments. Bar open. Lyn will make about 6 pieces, each of which will be prizes in the raffle run on the night. Booking advised, contact:

- Lyn (lynbespokeflorist@hotmail.co.uk) or
- Julie (07929794636, juliethompson435@gmail.com)

Friday 15th December, 7.30 for 8.00 pm: Quiz for Friends of Harford Manor school, teams of 4 ideally, £5 per person, raffle, bring your own snacks or buy chocolate or crisps at the bar. There are always Mars bars for the team with the lowest score!

Christmas and New Year opening times and events:

- Friday 22nd December, 8.00 pm
- Sunday 24th December, 8.00 pm
- Tuesday 26th December, 8.00 pm
- Friday 29th December, 7.30 pm. Bingo starts 8.00 pm, in aid of Nelson's Journey
- Sunday 31st December: Big Ant's Disco, 8.00 pm, members of Syleham and Wingfield Sports and Social club free, non-members £5.00 (SWSSC membership = £3.50 annually, £3.00 concessions)
- Friday 19th January: Quiz in aid of Hoxne PTA, 7.30 for 8.00 pm start
- Friday 26th January: Bingo starts 8.00 pm, in aid of Eye Opportunity Group
- Saturday 27th January: Burn's night celebration, traditional food, address to the Haggis, and a Piper! Please contact Donna for details, booking essential for this event as it is very popular - 07876487294 / 01379668361 / donnamariegoose@hotmail.co.uk

Syleham and Wingfield Village Hall

The Sports and Social Club volunteers open the bar every Tuesday and Friday from 8.00 pm - pop in for pool, board games, books and free wifi.

Warm Welcome continues Tuesdays 8.00 - 10.00 pm, first Tuesday of the month 10.00 - 11.30am and last Thursday of the month 1.30 - 3.00 pm, all very welcome.

Join us at Syleham and Wingfield Village Hall

**Enjoy an inspiring Christmas-inspired
floristry demonstration* by professional local florist,
Lyn Curtis ICSF**



Thursday 7th December

7.00 pm for 7.30pm start



Tickets £10 to include tea, coffee and light refreshments
Bar will be open – cash or card

**Amazing raffle – win the demo pieces*

Limited numbers, Booking advised!

Contact Lyn lynbespokeflorist@hotmail.co.uk
Julie [07929794636/ juliethompson435@gmail.com](mailto:07929794636/)

All proceeds to village hall funds



WE HAVE MOVED FIND US AT POLYTRADE

Websites Designed, Built and Optimized for Google, Bing & Yahoo

ALL THE SAME SERVICES - FREE PARKING - 01379 851117

We Specialise in:

- Computer, PC, Laptop & Tablet Sales
- Computer, PC & Laptop Repairs
- Web Design
- Social Media Branding & Management
- SEO (Search Engine Optimization)
- Computer, Laptop & Tablet Accessories

NEW ADDRESS

Polytrade Office, Rushall Road
Starston
Harleston
IP20 9NE

LAPTOP SCREEN REPAIRS

Call outs to your home available

DOES YOUR PC OR LAPTOP NEED REPAIRING?

Visit: www.ulric.net

CALL NOW

Email: sales@ulric.net

**LOCAL
ALES**

NORFOLK
& SUFFOLK



CAKES



WHISKEY
ARMAGNAC
CALVADOS
LIQUEURS
COGNAC
VODKA
RUM
COCKTAILS



KINGS HEAD
BROCKDISH IP21 4JY
kingsheadbrockdish.co.uk
01379 668843



TAKE-AWAYS AVAILABLE



PIZZA

WE SERVE
FRESHLY PREPARED
MADE TO ORDER FOOD
ALL DAY
FROM 12 NOON

PASTA



**OVER
200
GINS**



CLOSED MONDAYS
& TUESDAYS

OPEN 12 noon: WED - THUR until 10pm, FRI & SAT until 11pm, SUN until 9pm,

All Saints Thorpe Abbots
Village Christmas Food Bank Appeal

Many people will be struggling this Christmas and into the New Year and need support from the Food Bank. We thought we'd arrange a village collection. Even if it is just one or two items, lots of little bits will make a huge difference. Please do not include any perishable seasonal items such as mince pies etc, as they cannot use them. Please also check the sell by date, as they cannot use anything expired or near to expiry. Especially needed are:

<p>Pasta Sauces</p> <p>Individual sponge puddings</p> <p>Instant Custard/Rice puddings</p> <p>Tinned Fruit (incl small tins)</p> <p>Tinned Meat</p> <p>UHT Milk</p> <p>Tea/Coffee/Hot Chocolate</p>	<p>Gravy granules</p> <p>Jams</p> <p>Tinned Beans of all sorts</p> <p>Tinned Veg of all sorts</p> <p>Toiletries</p> <p>Microwave Rice</p> <p>Instant mash potato</p> <p>Sandwich spread, paste, Sweets</p>
--	--

Please just add a couple of these or other items to your shop and leave them in the boxes which will go out on Friday 1st December to Tuesday 12th December with:

- *Simon at 23 Mill Road*
- *Chris at Home Farmhouse, The Street*

Or bring them with you to the

- *Carol Service at 4.00pm on Sunday 10th December*

Thank you so much, every little bit will help.



Quiz Night

Saturday 13th January 2024
Brockdish Village Hall
7.30pm for 8pm start



- £5 per person
- Teams up to 6 people
- Light supper
- Bring your own alcohol



All proceeds towards Brockdish Church

Please call Jan Croxson (tel. 668630) to reserve a table

The Mariners Galley Cafe



All day Breakfast
Daily Specials
Homemade cakes
Fresh Coffee
Bistro nights
and much more

Opening times

Monday to Saturday 8am-4pm

Sunday 9am-3pm

Unit 6.Half Moon Farm
 The Street,Rushall
 IP21 4QD

01379 740529

www.themarinersgalley.co.uk

Village Defibrillators

Brockdish defibrillator is located on the outside wall of Brockdish Village Hall. At the Village Hall there is a clothes bank. All proceeds from this go towards the running costs of the defibrillator.

Thorpe Abbots defibrillator is located outside the Village Hall.



Waveney Heritage Centre

www.waveneyheritage.com
www.waveneywireless.org
waveneyheritagecio@gmail.com
Registered Charity No. 1192646



What a year it has been at the Waveney Heritage Centre. The year started last Easter by launching the Waveney Museum Trail, which is based at the Centre, and by opening our Museums: Waveney Wireless, The Museum of Broadcasting and The Museum of Memories, which includes a '30's Lounge', featuring furniture and fittings from the 1930's.

We offered monthly talks on a wide variety of subjects, two Open Weekends, our Christmas Fair, a guided walk around Harleston, and we revived the great community event of the Brockdish Village Garage Sale.

We are working on the Events List for 2024 which will include the return of Community Garage Sale. When dates are confirmed, they will be published in the forthcoming Mardlers and on our website.

During the winter, we will be open on the last Sunday of every month 10.30am to 3.00pm from October 2023 through to Easter 2024.

On behalf of us all at Waveney Heritage Centre, a huge thank you to everyone for their support over the last year. I wish you a Merry Christmas and a Peaceful and Prosperous New Year.

Jill Edwards - Trustee / Secretary

Full Steam Ahead

BORED WITH IRONING AND HOUSEHOLD CHORES?

LET ME HELP

DOMESTIC CLEANING

IRONING SERVICE

COLLECTION AND DELIVERY

CALL WENDY

01379 650380

07880726783



Village Notices

Brockdish Carpet Bowls

We are now competing in the Waveney Winter League, and at the time of writing, the team has played three matches. Brockdish narrowly lost the first with Great Hockham, but we've gone on to win both fixtures against Wortwell.

Roll-ups continue at Brockdish Village Hall most Thursday evenings (excluding home match nights) at 7.15pm for a 7.30 start. All are welcome. We are a friendly club, delighted to help new players, so come along and have a go!

Peter Croxson

Chairman, 01379 668630

Clothing Alteration & Dry Cleaning Service

**SUE
READ
SHOES**

GABOR | LOAKES
JOSEF SEIBEL
REIKER | BUGATTI
GEOX | MUCK BOOT
WALDLAUER

Ladies, Gents & Children's Shoe specialist

MENSWEAR

FYNCH HATTON | GURTEEN | JOULES
BAILEYS | GIORDANO | JOCKEY | BRUHL
DENTS | FALKE | PETER ENGLAND | VIYELLA

LADIESWEAR

GERRY WEBER | SELECTED FEMME | FOIL
JOULES | FALKE | DENTS | SOPHIE ALLPORT

16 The Thoroughfare, Harleston Tel: 01379 854332

HUNG DRAWN & QUARTERED Picture Framing

Visitors are welcome to
our new workshop

Studio 3, Wingfield Barns,
Church Road, Wingfield IP21 5RA

To book an appointment,
please call

Ivor Butcher M:07421 003466

ivor.hdqframing@gmail.com

www.hdqframing.co.uk

A Huge Thank You

At the Coffee Morning in October we raised the amazing sum of £640.98 for MacMillan Cancer Support. Thank you to everyone who helped and supported. It was a wonderful morning. Together we can make a difference!

Ann Cork

Gardeners Question Time

Join us for Gardeners Question Time at Thorpe Abbots Village Hall on **Saturday 3rd February at 7.30pm**. Tickets £6 (includes a cuppa & cake). Please phone Simon Beet on 01379 668132 to book tickets.

Many Happy Returns

Happy 90th Birthday to **Nancy Burridge** of Brockdish. Enjoy your special day!





T. L. PLANT HIRE

**If you are in a hole...
...we'll dig you out**

**07881
642232**

**MINI & MICRO DIGGERS
DUMPERS • BREAKERS • MIXERS
TELEPORTERS • SMALL PLANT
SCARIFIERS • TURF CUTTERS
WACKERS • ROTAVATORS
STRIMMERS • TOOL HIRE**

tom@tplanthire.co.uk

Diggers can be provided
with operator, if required.

Bridge House, Denmark Hill, Palgrave, Diss IP22 1AB



Waveney Volunteers for Nature

Some good news. Our AGM in October was a great success. It was well attended by members and representatives of the Parish and District Councils, as well as other supporters and organisations. A talk about commons by Helen Baczowska of the Norfolk Wildlife Trust was both informative and enjoyable. The reports on our first year of activity and our finances were well received. So, along with our growing membership, all is set for a great year ahead.



Some more good news. South Norfolk District Council has given us a grant to buy a power scythe and a trailer to move it around on. This will give a major boost to the work we can undertake on commons and other areas in the Waveney Valley.

Even more good news. At our AGM, we trailed the idea of “Brockdish - A Wildlife Friendly Village”. The idea behind this is to enhance the network of wildlife corridors in and around the Village, and to try to plug any gaps in that network. When we look closely, there is much that is already in place, and we hope to work with land and property owners, as well as other organisations, to improve the health and variety of wildlife around us. The last edition of the Mardler carried an article by ‘The Mardler Gardener’ called ‘Helping Wildlife’, and this describes exactly what being a Wildlife Friendly Village involves. A happy coincidence - great minds do think alike!

On the theme of ‘thinking alike’, the councillor who bid for the grant that gives us a power scythe, Councillor Trevor Graham from Harleston, in concert with Rev Nigel Tuffnell and others, are aiming to form a group of like minded organisations along the Waveney Valley from both Norfolk and

Waveney Volunteers for Nature

Suffolk. Presently, this includes Brockdish, Needham, Harleston and Wortwell. So we are not alone, and such a concerted effort can achieve greater things.

Not such good news. Despite all our efforts, Norfolk County Council has not yet responded positively to our request to transfer the redundant old school playing field to the community. We have pointed out how our ideas would boost the Local Nature Recovery Strategy that the County Council has been given £ ⅓ m to implement. In fact, the County Council has not yet communicated with parish councils or local communities about how it intends to spend its £ ⅓ m. We will continue to ask the County Council to recognise the old school playing field as an asset of value to wildlife and the community.

Derek Clark

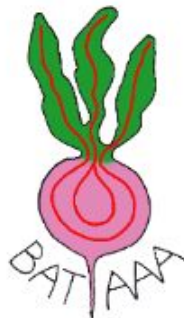
Waveney Volunteers for Nature

Brockdish and Thorpe Abbots Allotment Association (BATAAA) – plots available now

BATAAA is run by a committee of volunteers for members of the local community. The allotments are situated at the end of Church Road in Brockdish, just before the bypass. Having an allotment is an excellent way of getting your daily exercise whilst growing healthy food for the table, so why not give it a go?

We have a small number of full (250 m²) and half (125 m²) plots available, and there is water on site.

To find out more about the allotments or to check plot availability please email Rebecca Abrahall, BATAAA Secretary, at bataaaa@hotmail.co.uk, ring Liz on 01379 669016 or find us on Facebook.



O&C Butcher

ALDEBURGH • SUFFOLK

129-131 High Street, Aldeburgh, Suffolk

www.ocbutcher.co.uk



Paul's Carpentry

Paul's Carpentry

- Decking
- Pergolas
- Window repairs
- Bespoke Sheds Built
- Fascia and Bargeboards
- Doors replaced
- Shelving
- Bespoke Wardrobes
- Handrails replaced
- Understairs Cupboards

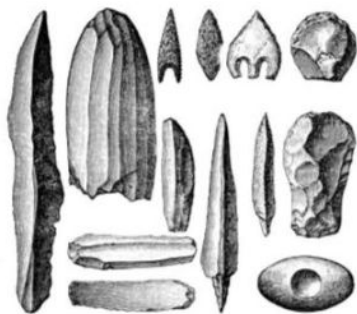
Mobile: 0779 234 0365

email: paulhb100@btinternet.com

Home: 01379 742500

Local History: Digging for Our Past***Local History by Elaine Murphy***

I have had a request from a reader who wants to know more about our local ancient history, so here it is! I confess I used to find ancient peoples and archaeology deadly dull; no voices calling from the past, no written record, hard to feel any connection to these Brockdish and Thorpe Abbots people who lived in Britain 2-3000 years ago. It seemed to me every museum started with the most boring ill-lit rooms, full of badly drawn 'dioramas' of strange looking people in desolate landscapes and endless bits of unfathomable flint and unrecognisable stone. You were supposed to study these tedious lifeless rooms before getting to the stories of real people. I soon learnt to gallop through without a glance. But if you want a selection of boring flint and some bronze age weapons, here they are...



When I was a child there was a popular TV programme on the BBC "Animal, Vegetable and Mineral" (1952 to 1959), when Sir Mortimer Wheeler and other academic luminaries would try and guess the identity of an object from the country's museums. I loved their high-minded attempts to educate us hoi-polloi. Since then of course there's been an explosion of fascinating programmes, from Time Machine with Tony Robinson, and Alice Roberts' Digging for Britain and many other programmes that have managed to enthuse us about matters archaeological.

Local History: Digging for Our Past

But museums are wising-up to the need to engage with children and the interested layman, and whilst the Norwich Museums Service has 6970 flint axes (yes really), you don't get them thrust down your throat in chronological order any more (metaphorically I mean). Museums are a lot more fun and so is the archaeology they display. And we can all be absorbed in the story of the folk who lived in our parish before medieval times, similar to us but different in so many ways. Norfolk is a special place to start exploring the historical and archaeological hinterland.



Sir Mortimer Wheeler (Right) and other erudite academics in the BBC panel game Animal Vegetable and Mineral (1952-1959)

It's not often that we can boast about Norfolk being first. But in archaeology, understanding our past from excavating what's beneath our feet, Norfolk has always been at the cutting edge, or should that be the digging edge? Back as early as 1923, Norfolk County Council was recording findings and later established the first county archaeological service. But long before that, the Norfolk and Norwich Archaeological Society, a registered charity founded in 1846, was publishing its reports and is still a thriving local society today. We also have the Norfolk Archaeological Trust (NAT), which currently cares for nine monuments in the county. Together they tell the story of Norfolk's history over thousands of years: a prehistoric burial mound, (Fiddlers Hill Barrow at Warham), Iron Age Forts (eg. Bloodgate Hill Fort at South Creake), a Roman town (Venta Icenorum) and fort (Burgh Castle), medieval monasteries, (St

Local History: Digging for Our Past

Benet's Abbey and Binham Priory) a castle mound (Middleton near Kings Lynn) and the site of an 18th century chapel.

The Norfolk Heritage Explorer (<https://www.heritage.norfolk.gov.uk/>) is a lovely website for browsing the most striking findings of the hundreds of archaeological treasures in the Norfolk Historic Environment Record held by Norfolk County Council, some of them in our parish, and dozens within a few miles in South Norfolk. The database holds over 60,000 records describing the archaeology of Norfolk from the earliest evidence of human occupation from 9,000 years ago to the present day.

Each year, there are dozens more findings from research, serendipitous digging, amateur sleuthing, or like last summer, new evidence of extensive settlements revealed from the air by drought. Norfolk was the first council to encourage landowners to allow serious metal detecting on their land, which has paid off in a rich dividend of finds, such as the Snettisham Treasure, where hundreds of Iron Age items have been found over six decades. Recently in 2014, a former archaeology student managed to unearth a unique piece of seventh century jewelry near Winfarthing.

This last year, an image, captured from a Cessna 150, showed the larger extent of the well-known Roman settlement at Caistor St Edmund, near Norwich, highlighted by the parched conditions revealing regular lines in the field. The first modern exploration of the site came after evidence of it was detected by an RAF aerial reconnaissance of the area during a hot spell in 1928. Last year, other images, captured near Great Yarmouth, in mid-Norfolk and south Norfolk (at Great Ellingham), show several ring markings in the fields, as well as ancient roads and what is thought to be a medieval moat. The lines one can see on the photo below are actually Roman streets of the sizeable town, Venta Icenorum. We think of it as an army base, because of the English name 'Caistor' (from the Latin 'castra', meaning army camp), but the Latin name comes from the old capital town of the Iceni tribe, laid out in the usual regimented fashion of the Romano British settlements of c AD70.

Local History: Digging for Our Past



*Aerial Photo of fields
south of Caistor St
Edmunds showing
Roman street markings
(2022)*

But what about closer to home? Long before the Romans arrived, there was a farming community here in our parish. The earliest datable evidence of human activity comes from Neolithic (~4300 BC-2000 BC) flint tools used for hunting, found in the eastern (Thorpe Abbotts part) of the parish. Further afield, there is a Neolithic barrow, or burial mound, at Broome Heath, Ditchingham, but no Neolithic bones have been found. At present, there are no finds from the Bronze Age (3300 BC-1200 BC). Although there may be ring ditches and remains of burial grounds, these people left few remains. Likewise, so far, the iron age (1200 BC-600 BC) hasn't left much in our parish either, so far as we know.

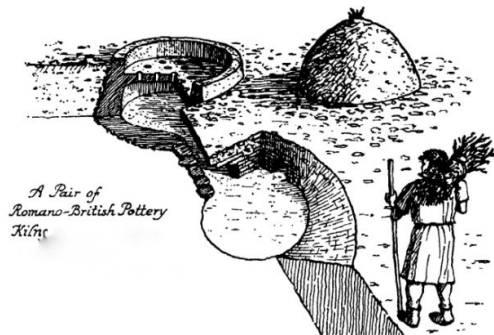
I still find that history gets more exciting when the Romans arrived, and started writing about themselves and the Britanni (Britons). I wrote something in the Mardler about them in 2017 (Edition 212). In 1994, a well-preserved Roman kiln was discovered under the field due north of All Saints Church, Thorpe Abbotts. There are many old kilns around here because of the heavy clay available in the area, but this is the only Roman one. Excavation around it revealed lots of pieces of pot. The pottery was typical of a third/fourth century date. They also found a coin of Victorinus (Emperor c269-71) inside the kiln.

Coin of Victorinus c270 AD



Local History: Digging for Our Past

*Third to Fourth
Century AD Roman
Kiln, Thorpe Abbotts*



Every year there are new finds from the Roman period in Norfolk. One of the most recent listed on the Norfolk Heritage database is an alloy metal “nummus” (low value trading coin) made in Trier, Germany, where a Roman mint was operating from the first century BC to the third century AD. There are dozens of coins surviving from this mint, hardly surprising given that the main objective of the imperial mints was to provide money to pay the troops, and of course the people who traded with the Roman legionaries would carry these coins too. So we don’t know if this coin was dropped by a serving soldier or a local farmer or a travelling trader.

But let me leave you with a recommendation. I belong to Norfolk Archaeological & Historical Research Group NAHRG (pronounced 'narg'), Norfolk's local history and archaeology club. (<http://www.nahrg.org.uk/>) You don't need to be a researcher to join. It is remarkably cheap, and you just need to be interested in Norfolk, its history, heritage and archaeology.

Private Tutor – Isabel Boycott

Primary English and Maths tuition

Secondary Maths tuition

Entrance exam practice (verbal reasoning/non-verbal reasoning/English/Maths)

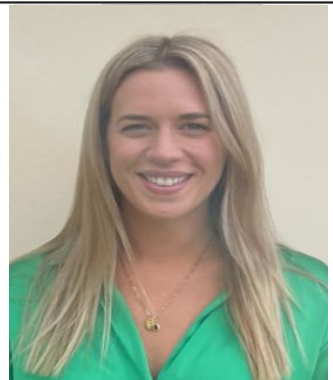
Interview preparation

Please visit website below for experience and testimonials

Phone: 07721129480

Email: isabelboycott@gmail.com

Website: www.peterstutors.com



**NEW &
IMPROVED
PRODUCT
RANGE**

Transform your garage from £995

Garolla electric roller doors, engineered for everyday life.

Garolla's new range is strong, secure and durable. Revitalise the look, feel and function of your home.



- **Unlock 25% more space**
- **Free five-year warranty**
- **100,000+ doors installed**
- **UK's #1 recommended**
- **Fitted by a local Garolla engineer**
- **New SafeGuard Plus pack – more light, detection and deterrence**



garolla.co.uk

We survey, manufacture and fit...

01379 210 037

CALL TO ARRANGE A **FREE SURVEY**

BESPOKE ELECTRIC DOORS
MADE IN THE UK



Checkatrade
Where reputation matters
9.8 out of 10

Trustpilot
4.7 out of 5 / 6,000+ reviews

**SELF-CATERING
HOLIDAY ACCOMMODATION
"CANALSIDE"
SAWMILLS, DERBYSHIRE
BUNGALOW – SLEEPS 4**



**HELEN AND PETER GILBEE
01379 740339**

WEBSITE: HOLIDAYCOTTAGES.CO.UK
PROPERTY NUMBER: PK934

Thorpe Abbots Village Hall Upcoming Events

Natter Mornings: 10.30am-12.00pm

- **Thursday 7th December**
- **Thursday 4th January**

*Bar nights are having a winter rest
and will recommence in the Spring.*



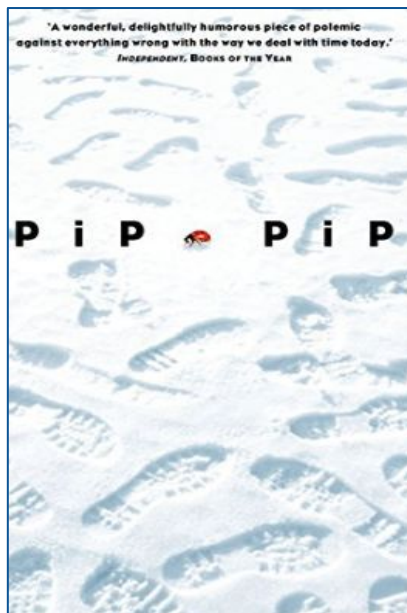
The Book Club recommends...

A big thank you to Paddy Tanton for her review this issue. Remember, if you would like to write a review of a favourite book, either fiction or non-fiction, you can email me at judecham@gmail.com.

***Pip Pip: A Sideways Look at Time* By Jay Griffiths (1999)**

Pip Pip is a beautifully written, witty and passionate analysis of the relationship between people and time. Griffiths introduces us to a much older, wilder concept of time - a time western culture in particular has forgotten - a time which is natural, cyclical, led by seasons and phases of the moon, when Festivals of Fools suspended time and all manner of mischief was allowed. She tells us of how time is experienced in many other cultures, for example, Aboriginal dreamtime and Inuit 'long time ago in the future' time. She argues that women, through their reproductive cycles, have a different internal sense of time, and children, as many parents know, have little sense of time at all.

Time now is standardised and linear. She argues 'there is no place on Earth which western progress does not shadow. It dictates and controls our working lives and has driven a fast food, fast bucks, fast cars, time is money culture. At the end of the 20th Century, she depicts Chronos as a relentless consumer devouring the world and eating all before it - an interesting prediction of the environmental issues facing us 24 years later. However, despite all this, the book is dazzling and hopeful.



Household blinds Interior shutters Conservatory blinds

Call Alastair or Amanda
for more information:
Rectory Cottage,
Church Rd,
Brockdish.
01379 669209
www.villagegreenblinds.co.uk

Village Green



Blinds & Shutters



PUMP COTTAGE

THE OLD LAUNDRY AND THE HAYLOFT.

SELF CATERING HOLIDAY
ACCOMMODATION

IN THE HEART OF THE WAVENEY VALLEY.



17TH CENTURY COTTAGES WITH 2 ACRES OF WOODLAND
AND GARDEN LEADING TO THE RIVER WAVENEY.

JACKIE AND JOHN SPOONER.

THE OLD COACH HOUSE.

THE STREET BROCKDISH NR DISS NORFOLK

TEL 01379 668146

EMAIL jackiespooner@btinternet.com

WEBSITE: www.brockdishholidaycottages.co.uk



MONDAY - FRIDAY 7.30AM - 5PM
SATURDAY 7.30AM - 1PM

UgoBuild
DIY & Building Supplies

MONDAY - FRIDAY 7.30AM - 5PM
SATURDAY 7.30AM - 1PM



 **CALOR GAS**

We would like to welcome the business formally known as
RACKHAMS BUILDING SUPPLIES in HARLESTON

to the UGOBUILD Group of companies.
Business as usual no real change
apart from the tee shirts and logos.
Same staff, same product and the same great service.

POLYTRADE & UGOBUILD

GLASS & SEALED UNITS - GUTTER & DRAINAGE - WINDOWS & DOORS
SCREWS & FIXINGS - VENTS & DUCTING - FASCIA & SOFFITS - DOUBLE GLAZING
FIRE LOGS & GAS - ROOF SHEETS - WASTE PIPE - MDPE PIPE - SILICONE

Rushall Rd, Starston, Harleston, Norfolk, IP20 9NE - 01379 854445 - info@polytradesupplies.co.uk

The Worst Christmas Cracker Jokes

Why do barbers make good drivers?

They know all the shortcuts.

Why does Santa Claus have a garden?

He likes to hoe hoe hoe.

Why do birds fly south in the winter?

It's too far to walk.

What has eyes but can't see? *A potato*

What has teeth but never eats? *A comb*

What do you call a big green thing that sits in the corner and cries?

The incredible sulk.



Useless (or interesting) facts to liven up Christmas party conversations!

The first letters of the months July to November spell Jason.

Ants can't chew their food.

The Cashew is a member of the poison ivy family.

Bats turn left when leaving a cave.

Deer can't eat hay.

Kangaroos can't walk backwards.

A wooden racket was last used at Wimbledon in 1987.

Bagpipes were invented in Iran.



A N D R E W S

LOCKSMITH

YOUR LOCAL RELIABLE LOCKSMITH EXPERT



GAINING ENTRY
RE-SECURING
LOCK CHANGING
KEY CUTTING



07966 693048 / 01986 783860

andrewslocksmith.co.uk

Locks24hour@gmail.com

A message from Councillor Martin Wilby

I was very pleased to attend the recent service at Dickleburgh Church for the Induction and Installation of The Reverend Carl Melville as Rector of Dickleburgh, The Pulhams and Starston by The Right Reverend Graham Usher, Bishop of Norwich. I wish Carl every success in his new role and look forward to working with him over the coming years.

Norfolk County Council is looking for individuals who want to make a positive impact by becoming a volunteer driver for the Travel Norfolk Car Scheme. The scheme offers a chance for people to contribute their spare time while providing essential transportation for those who may face challenges in getting to where they need to go. The Travel Norfolk Car Scheme plays a crucial role in ensuring eligible adults can reach vital health, social and wellbeing services through essential journeys. Passengers contribute 45p per mile towards the cost of the journey, plus any car parking fees. If you are interested in joining the scheme please visit www.norfolk.gov.uk/volunteerdrivers or by phone on 0344 800 8020.

A Norfolk Fire and Rescue Service (NFRS) programme, which has educated more than 80,000 children about fire safety, is marking its 20th anniversary. Crucial Crew, a popular fire safety and prevention initiative for Year 6 schoolchildren, aims to deliver seven events around the county this academic year, reaching around 6,000 students. The service's Protection and Prevention Team has played a key role in empowering children and young people to help spread crucial safety messages over the last two decades, with their vital work earning an award nomination at the inaugural Flourish Awards. The free programme sees NFRS work alongside partners including Norfolk Constabulary, NHS, Road Safety, Norfolk Prepared, RNLI, East Anglia Air Ambulance, St Johns Ambulance, HM Coast Guard and Cadent Gas.

Norfolk Fostering is part of Norfolk County Council. There are over 1,000 children and young people in care in Norfolk, many of whom are looked after by foster carers. Norfolk Fostering Service always needs

A message from Councillor Martin Wilby

more people who can provide the strong, stable and secure family environments that can help change more young lives in our county. If you are interested in fostering, or have more questions, please get in touch with our friendly team by calling on 01603 306649, text fostering to 87222 or visit the website www.norfolk.gov.uk/fostering and complete an initial application form.

The development of a new bypass for Long Stratton enters a new phase following confirmation of the full planning permission by South Norfolk Council for its construction, along with over 1,800 new homes, new employment land and a site for a new primary school. NCC has worked in collaboration with SNC, Norfolk Homes Ltd and Norfolk Land Ltd to develop proposals to deliver a long-awaited bypass of Long Stratton on the eastern side of the town, which will cut congestion and support the local economy. This is a significant step towards construction, as it enables NCC to now seek delegated authority from its Cabinet to submit a Final Business Case to Government, which once approved will release the vital funds needed to build the new road.

Wishing everyone a very Happy Christmas and a Healthy New Year

Martin

**Jane's
Hair & Beauty**

For Ladies and Gents

To make an appointment call 01379 831336

Bungay Road, Scole

*Facials
Manicures
Pedicures
& much more*

The Crafty Bombers

@ Thorpe Abbots Village Hall

The Crafty Bombers is a club for busy kids who like to do busy things!

Each month there is a themed session with a variety of activities. Refreshments included. Toys and games are also provided to keep younger children occupied.

- **Saturday 9th December, 4.00 pm**
Christmas lantern making
Followed by lantern parade to
Christmas Tree for lights switch on
- **Sunday 14th January, 10.30am**
Winter Wildlife



For those who are unable to attend, please let me know and I will arrange a craft bag for you to do at home!

To cover the costs of materials, we ask for a donation of £1 per child. Any crafty donations also gratefully received!

For any enquiries please contact Jo Slater
tel. 668585 / jogslater@hotmail.com

LOCAL PROFESSIONAL CARPET AND UPHOLSTERY CLEANING

Reasonable Rates

CALL DAVID
Telephone: 01379 608 529
Mobile: 07768 757308

KM Gardencare



Hedge & Lawn Cutting
Fencing Erected & Stained
Trees Pruned & Felled
Seeding & Turfing
Patios & Driveways
Gardens Cleared
Stump Grinding
Mini Digger Work
All Garden care Undertaken
Phone: 01379 687983
Mobile: 07799 492603

TREE MENDERS



Environmental Arboriculture

treemenders@yahoo.com

07905 750 070

01379 853 070

Tree surgery.
Tree consultancy.
Stump grinding.
Firewood.

◊ Darren French

103 High Road, Needham
Harleston, IP20 9LG

www.treemendersnorfolk.co.uk

Do You Need Your Garden

TIDYING UP?

Call Tom Bell on

01379 669293

or

07905 208209

Very reasonable rates



Brockdish and Thorpe Abbotts Parish Council

Chairman: Christine Mackenzie (01379 668818)

Clerk: Teresa Hines (01379 308617)

Email: brockdishthorpeabbottspc@gmail.com

Planning www.southnorfolkandbroadland.gov.uk/planning**Applications:**

- 2023/2744 Conversion of swimming pool to dwelling. Land North West of Thorpe Abbotts Place, The Street, Thorpe Abbotts
- 2023/2671 Demolition of existing rear extension and erection of a new two-storey rear extension. Rectory Cottage, Church Road, Brockdish
- 2023/2833 2023/2834 Detached carport and storage building, garden gazebo structure with associated external works, paving to existing rear entrance area, paving area to existing front garden area, a new greenhouse structure, a new gate to existing eastern side entrance, single-storey extension to existing stable building, a new open-fronted building for paddock equipment storage, window alteration to existing study area, external insulation to existing north gable area, internal insulation to existing kitchen external walls, new floor and insulation to existing kitchen floor and replacement of existing pantiles to single-storey extensions, and annexe, with red clay plain tiles to match the main roof area. Grove Thorpe, Grove Road, Brockdish

Decisions:

2023/0992 Erection of Summer House. Rose Cottage, Scole Road, Brockdish. Approved by SNC and PC.

Please park considerately in Brockdish

A number of Brockdish residents have raised their concerns to the Parish Council about the parking in the centre of the village, in particular, outside the Village Hall, around the Village Green and more recently, along The Street, close to the junction with Old Forge Court.

The exit from Common Lane is of particular concern, with large trucks or vans often parked extremely close to the junction, making it impossible to see that the road is clear to pull out. This is also the case at the junction of Old Forge Court, with cars parked on both sides of The Street close to this junction. We know from the recent speed monitoring, that many vehicles have been travelling in excess of the 30mph speed limit when approaching this part of the village.

Brockdish and Thorpe Abbots Parish Council

We appreciate that many households have limited, or no, off-road parking, and most households have more than one car, some having several vehicles parked around this area.

The Parish Council have resisted the idea of having double yellow lines at the junction of Common Lane, Syleham Rd, Grove Rd and Old Forge Court, and hope residents will go some way to considering the Highway Code on parking close to junctions:

Highway Code Rule 243: Do not stop or park opposite or within 10m (32ft) of a junction, except in an authorised parking space.


If yellow lines are the only option, this would considerably reduce the parking through this stretch of the Village.

So please park considerately, respecting the safety of other road users and fellow residents, and emergency response vehicles.

This matter will be reviewed at our scheduled meeting on 11th January 2024 to discuss if any further action needs to be considered.

Street Lights

Should you notice a street light outage, then please report to Christine MacKenzie or Teresa Hines or email brockdishthorpeabbottspc@gmail.com.

 We would like to wish you all a very happy Christmas!

Dates of next scheduled meetings

Members of the public are most welcome to attend. Agenda posted on both village notice boards prior to the meeting.

- No meeting is held during December
- Thursday 11th January 2024 7pm at WHC, Brockdish
- Thursday 29th February 2024 7pm at Thorpe Abbots Village Hall
- Thursday 28th March 2024 7pm at WHC, Brockdish

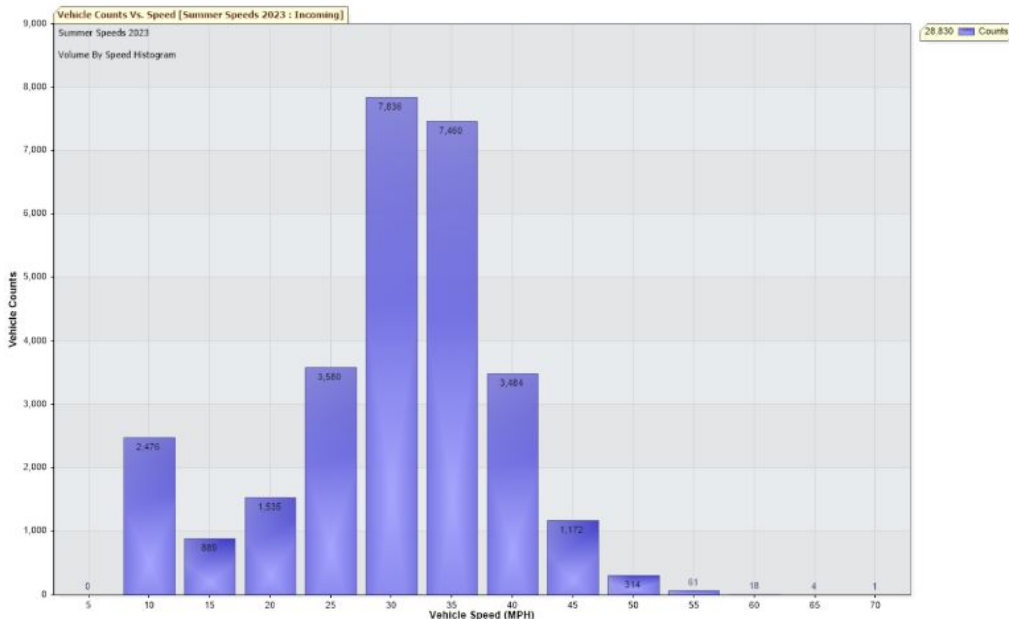
Summer 2023 Speed Report

28,830 total vehicles between 16th April and 28th June 2023 (oddly, and I can't explain why, Gareth says the sign was first put up in February but data only starts in April).

- **12,514 were travelling over 30 mph**
- **1570 were doing over 40 mph**
- **84 were doing over 50 mph**

In April 2023, the worst time of day was 4.00 - 5.00 am, where the average speed was 42 mph. In May, it was also the worst time of day with an average speed of 42.5 mph, and in June it was 2.00 - 3.00 am, with an average of 48 mph.

It is worth mentioning each month, average speeds were close to 40 mph up until 8.00 - 9.00 am, and then reduce to 33 mph after 9.00 am.



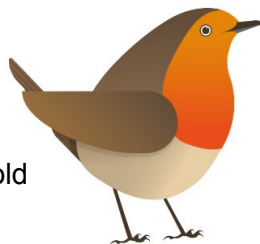
Around the garden in December and January

December

- ☐ Feed birds in cold weather and do not allow ponds and bird baths to freeze over
- ☐ Continue winter digging, incorporating organic matter
- ☐ Clean paths, and repair sheds and fences
- ☐ Repair lawns, if conditions allow
- ☐ Shred the prunings from ornamental plants, fruit trees and bushes
- ☐ Prune ornamental vines
- ☐ Water overwintering plants kept under cover sparingly, to avoid the risk of rotting
- ☐ Earth up tall Brussel sprouts stems to support them
- ☐ Bring bay trees undercover, to protect them from cold

January

- ☐ Ensure that birds have food and water
- ☐ Cover ground to keep out the wet
- ☐ Protect plants that are vulnerable to wind and cold
- ☐ Aerate lawns
- ☐ Keep an area of ponds free from ice
- ☐ Keep on top of winter-geminating weeds
- ☐ Refirm newly planted trees and shrubs, if lifted by frost
- ☐ Brush snow off any branches so they don't break, and check any supports
- ☐ Plant deciduous hedging
- ☐ Prune shrubs, trees and climbers, such as wisteria, into shape
- ☐ Clear plant crowns of fallen leaves
- ☐ Sow sweet peas undercover
- ☐ Chit early potatoes
- ☐ Force rhubarb



Christmas Fayre

Spiced Nuts

300g mixed unsalted nuts, shelled

A few sprigs of fresh rosemary

30g unsalted butter

2 tbsps soft dark brown sugar

½ tsp cayenne pepper

2 tsp mild paprika

A good pinch of sea salt



Melt the butter and sugar in a large heavy pan. Add the chopped rosemary, cayenne, paprika and salt, and then toss in the nuts. Stir until the nuts are evenly coated. Toast on a low heat, stirring until the nuts look brown and crisp. Tip the nuts onto a large sheet of greaseproof paper in a single layer until cool.

Chestnut Chocolate Pots

175g dark chocolate

125ml double cream

125ml full fat milk

1 egg

1 x 250g sweetened chestnut puree

2 x 15ml tabs dark rum



Finely chop the chocolate. Heat the cream and milk until just boiling, then pour over the chocolate. Let it stand for 30 seconds then whisk for before adding the egg, puree and rum, and mix until well combined. Fill 6 x 125ml glasses or pots. Serve with more whipped double cream if you wish.

Christmas Fayre

Classic Old Fashioned Trifle

1 X 400g can of pears
1 packet of 8 trifle sponges
Strawberry jam
75ml medium dry sherry
10 ratafia or broken almond biscuits
(such as macaroons)
600ml fresh vanilla custard
300ml double cream
25g toasted flaked almonds
Deep serving dish, just over 20cm (8 inches)in diameter.



Drain the fruit, reserving the juice. Cut into small pieces. Split the sponges in half, and sandwich together with the jam. Pour the sherry into a jug and make up to 150ml with the reserved juice. Put half the chopped pears into the base of the dish and arrange half the sponges on top. Repeat with a layer of pears, then more sponges. Scatter the ratafia biscuits on top, and pour on the juice mixture evenly. Carefully pour the custard over the top. Whip cream until it holds its shape, and spoon over the custard. Sprinkle with the almonds just before serving. Serve chilled.

G.G. EVANS

Pest Control Services

07795 177695

01379 608932

info@ggevens.co.uk

**MOLES, RABBITS,
WASPS & MORE**





Part P compliant



**All Domestic &
Commercial work
Fuse boards
Fault finding
New wiring / re-wiring
Testing & Inspection
Network cabling**

07590 507307

www.bloomfield-electrical.com



Open Tuesday to Saturday

**ESPA facials, massage,
manicures, pedicures,
gel nails, ear candles, tinting,
lash lift, brow lamination
and much more...**

**1a Sawmills Road, Diss,
Norfolk IP22 1PT**

Tel 01379 643533

www.edennaturalbeauty.co.uk

Mr P.C. Gilbee

M.S.S.Ch, M.B.Ch.A.

Qualified Chiropodist

**Registered Member of the
British Chiropody Association**

***HCPC Registration Number
CH24740***

**To arrange an
appointment for a home
visit please telephone
01379 740339**



restoring your balance

**Offering Swedish,
Aromatherapy, Sports, Hot Stone
and Indian**

**Head Massage treatments
All within the comfort of**

your own home

01379-669351

07990-520706

rachael@jrbaskerville.co.uk

www.jrbaskerville.co.uk

The meaning of the 12 Days of Christmas

This 16th century song has hidden meanings. Though entirely secular in appearance, it was a way for persecuted Catholics to hide teachings in the Bible, and to pass on traditions to their children without risking punishment.



The first day of Christmas: a partridge in a pear tree. This represents Jesus, saviour to the Christian world.



The second day of Christmas: two turtle doves. The Old and New Testaments.

The third day of Christmas: three french hens. The theological virtues of faith, hope and charity.

The fourth day of Christmas: four calling birds. Matthew, Mark, Luke and John.



The fifth day of Christmas: five golden rings. The first five books of the Old Testament.

The sixth day of Christmas: six geese a laying. Symbolises new life, so are associated with God's creation.

The seventh day of Christmas: seven swans a swimming. The seven sacraments of the Catholic faith.

The eighth day of Christmas: eight maids a milking. The maids represent the Beatitudes.

The ninth day of Christmas: nine ladies dancing. The nine fruits of the Holy Spirit.

The tenth day of Christmas: ten lords a leaping. The Ten Commandments.

The eleventh day of Christmas: eleven pipers piping. The eleven faith apostles.

The twelfth day of Christmas: twelve drummers drumming. The doctrine of the Apostles' Creed.



DWS

FENCING AND GARDEN MAINTENANCE

ALL TYPES OF FENCING

TREES AND HEDGE CUTTING

LAWNS CUT, TURFED

PATIOS & DRIVEWAY

STUMP GRINDING

MINI DIGGER

CHIPPER WORK

MEMBRANE AND STONE

PRESSURE WASHING

ALL GARDEN WORK UNDERTAKEN

ALL RUBBISH DISPOSED

HOUSE, GARAGE, SHED AND YARD CLEARANCE

FULLY INSURED

TEL: 01379 650380

MOB: 07899 893380

Michael Last Landscapes

HARD and SOFT LANDSCAPING
PROPERTY MAINTENANCE
INTERIOR/EXTERIOR PAINTING

07342 880254

01379 669006



last.michael@btinternet.com

C.E. SERVICES

- Hedging
- Tree Surgery
- Wood Splitting

- Firewood
- Stump Grinding
- Fully Insured

Email: CraigElgoodServices@outlook.com

Tel: 07584678207  

Ramblings from The Rectory

By Rev. Nigel Tuffnell

As I write this I am not in the Christmas spirit at all, in fact I feel like Scrooge and want to cancel the whole thing. But as I let the grump go, I can start to look forward to all that Christmas means.

I start to think of all the carols and special services. Jesus may not be the household favourite that he once was, but at Christmas we still remember him, at least in passing, perhaps on the way to a second helping of Christmas pudding. Sometimes Jesus even appears on a Christmas card or two, usually those left in the bottom of the box, reserved for friends that are 'religious' (i.e. a bit odd). Strangely, I often get the Jesus cards, I can't think why.

The Christmas hymns and carols are old and comfortably worn, and the words are familiar. But, for me, it is the Gospel reading the really sends shivers down my spine, "In the beginning was the Word, and the Word was with God, and the Word was God. The same was in the beginning with God. All things were made by him; and without him was not anything made that was made. In him was life; and the life was the light of all people."

I hear those words from the very beginning of John's Gospel, and I remember what it is all about. I remember that in Jesus, God became part of his creation, so that I, all people, and all creation could become one with God once again. I remember the power of God to change my life, and all lives for the better.

Whether you agree with me or not, I wish you a Happy Christmas!

God bless you now and throughout the New Year.

Nigel

All Saints Church, Thorpe Abbotts

Firstly, and most importantly, a huge thank you to all of those who generously supported our Gift Day on 14th October, both financially and in kind, with a very generous donation for the guttering we need to put on the Church porch. As an aside, on the historical front, up to the 1840's the village was known as Thorpe Cornwallis, and more recently just as Thorpe. Thank you again for your generous support and it was lovely to meet up with those who dropped by the Village Hall.

The quiz was a great success with a full house. This is a somewhat bizarre event where the fiercest competition is for the wooden spoon. At least three tables were in the mix, with the honours finally going to the Pursehouse family, with Jack, the youngest team member, coming up to claim the prize, along with its packet of M&Ms. Honours of the evening went to David and Yvonne's table, so I am delighted to announce that both the Spoon and the Crown stayed in the village.

Our next Church fundraising event will be a Gardeners Question Time on Saturday 3rd February. We hope to entertain and help you all to get ready for another growing season. We have still yet to formalize the format, but it is something very much to put in your diaries.

Last Christmastime, we ran a very successful collection for the Waveney Foodbank. We will be doing the same again this year. There are many out there struggling financially and getting food onto the table. At this time of year, when those who can are celebrating, it would be nice to be able to do a little for those less fortunate than ourselves. A couple of extra packets of dried items or tins each time we shop would work well. We did brilliantly last year through your generosity, let us see what we can do this year.

All Saints Church, Thorpe Abbots

This years Carol and Christingle service will be on Sunday 10th December at 4.00pm, following on from the Village Christmas lights switch on and a visit from you-know-who on the Saturday. Please join us to round off a truly festive weekend.

May your Christmas be full of cheer and 2024 all you could hope for.

Simon Beet



Brockdish Church

The Christmas Carol service by candlelight is on 17th December at 6.00pm. It is a lovely evening for us to celebrate this special time of year. Please try and come along.

We have held various fundraising events throughout the year and the PCC is most grateful for all the continued support. The Church is a grade 1 listed building and takes a lot of looking after, besides everyday running expenses.

The next quiz will be 13th January. Come along and stretch the old brain cells! Any queries give me a ring.

On behalf of the congregation of Brockdish Church, may I wish you all a joyous and peaceful Christmas.

Jan Croxson - Church Warden (tel.668630)

Church Contacts

Minister in Charge www.7churches.org.uk	Revd Nigel Tuffnell rector@7churches.org.uk
Benefice Administrator admin@7churches.org.uk	Mon to Fri 9.15am to 1pm 01379 851148 Facebook.com/7churches.org.uk
Brockdish Church Wardens	Ann Cork - 01379 668635 Jan Croxson - 01379 668630
Thorpe Abbotts Contact	Christine McDonald - 01379 669116

Church Service Times - December 2023 and January 2024

3rd December	Brockdish 9.30 am	Morning Prayer
10th December	Brockdish 9.30 am Thorpe Abbotts 4.00 pm	Holy Communion Christingle/Crib Service
17th December	Brockdish 6.00 pm	Carol Service by Candlelight
24th December	Brockdish 9.30 am Thorpe Abbotts 11.30 pm	Morning Prayer Midnight Eucharist
25th December	Brockdish 9.30 am	Informal Holy Communion
31st December	Brockdish 9.30 am	Morning Prayer
7th January	Brockdish 9.30 am	Morning Prayer
14th January	Brockdish 9.30 am Thorpe Abbotts 9.30 am	Morning Prayer Holy Communion
21st January	Brockdish 9.30 am	Holy Communion
28th January	Brockdish 9.30 am	Holy Communion



LUXURY BATHROOMS

DESIGN & INSTALLATION



Call 01379 788 882
greenbrickprojects.co.uk

PAYMENT OPTIONS AVAILABLE